

# Keylite Range

---



## Centre Pivot

The most popular and versatile choice, suitable for most applications.



## Fire Escape/Top Hung

Choose when a means of escape is required or when a 45° opening is preferred.



## Integral Blind Roof Window

The attractive blind is permanently enclosed between the panes of glass and therefore is protected from moisture, dust and damage.



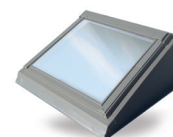
## Conservation Window

Ideal for use in a period style property, replicating the look of a traditional sky light.



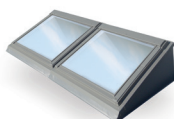
## Vertical Bi-light

Maximise the light and ventilation in your room by combining both a pitched and vertical window.



## Flat Roof System

Available in single or combi formats to enable the fitting of any Keylite Roof Window onto a flat roof.



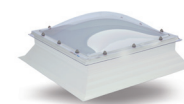
## Combi Roof System

Available in single or combi formats to enable the fitting of any Keylite Roof Window onto a flat roof.



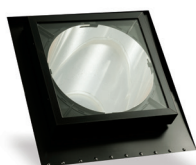
## Flat Roof Apex

These elegant overhead features provide natural daylight for spaces under flat roofs. Ideal for kitchens and living areas.



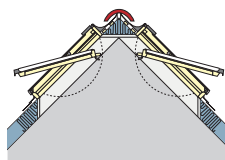
## Flat Roof Dome

Virtually unbreakable, with an impact strength 250 times greater than glass. Keylite Flat Roof Domes can be supplied with a clear or frosted finish.



## Sun Lite™ Light Tube System

A Keylite Sun Lite™ transports natural daylight into areas where conventional pitched or flat roof windows cannot be used.



## Ridge Windows

Windows installed at the highest point of a pitched ceiling create a striking feature.



## Surface Fitted Blinds

Blinds not only look great but play an important role in managing heat and light, shading a room when it gets too sunny and preventing heat loss.